

NEWSLETTER



Winter 2011 Issue No.53

TAKELEY PARISH COUNCIL

TPC RESPONSIBILITIES:

AREA OF RESPONSIBILITY	REMIT	COUNCILLOR
CHAIRMAN		Richard Cheetham
VICE CHAIRMAN		Carol Pratt
FINANCE COMMITTEE		Richard Cheetham, Carol Pratt, John Orpin
PLANNING COMMITTEE	Planning Applications, Stansted, Housing Policy	Carol Pratt, Trevor Allen, Tricia Barber, John Orpin
HIGHWAYS & TRANSPORT		Brian Baldwin & John Gregory
SPORTS FIELD		Trevor Allen, John Gregory, Alan Jones (Youth football project)
RECREATION GROUND		John Green
RIGHTS OF WAY/FOOTPATHS/LAND	Rights of Way/Footpaths/Land, Tree Warden, Flich Way	Trevor Allen & John Green.
MOLEHILL GREEN *	Green, Hall & Community	Carol Pratt
POLICE LIAISON/PUBLIC SAFETY UPCC & NAB rep.		John Gregory & Trevor Allen
PUBLICITY	Notice Boards, Website, Newsletter, Grapevine, Press	tbc
PRIMARY CARE TRUST	Health Care Policy	tbc
REGIONAL/NATIONAL POLICY		Geoff Bagnall
PARISH PLAN		Carol Pratt

*NOTE: Cllrs. Carol Pratt & Trevor Allen are trustees of Molehill Green Village Hall

TPC REPRESENTATIVES:

REPRESENTATIVE	COUNCILLOR/RESIDENTS
Essex Assoc. of Local Councils	Cllrs Richard Cheetham, Carol Pratt
Area Forums	Clr Tricia Barber
Parish Passenger /Transport Gps	Clr Brian Baldwin, Clr John Gregory, Martin Peachey, Phyllis Altham
Priors Green Working Party	Cllrs Carol Pratt, Alan Jones, Geoff Bagnall, John Gregory
Local Council Liaison Committee	Cllrs Richard Cheetham, Carol Pratt
Takeley Local History Society & School	Clr Trevor Allen
Silver Jubilee Hall	Clr Trevor Allen

All roles confirmed & agreed TPC Meeting May 2010

DISTRICT & COUNTY COUNCILLORS

REPRESENTATIVE	COUNCILLOR
District Councillors	Cllr Jackie Cheetham Tel/Fax: (01279) 870706 cllrcheetham@uttlesford.gov.uk Cllr Derek Jones Tel: (01279) 870870 cllrdjones@uttlesford.gov.uk
County Councillor	Cllr Susan Barker Tel: (01245) 231250 Fax: (01245) 231810 Cllr.Susan.Barker@essexcc.gov.uk

This and back issues can be viewed on our website www.takeleypc.co.uk

Editorial

In which the editor gives culinary hints and recalls theatrical triumphs long past.



The first Christmas card of the year tumbled through my letterbox today and, along with the shortening of the days, delivered a seasonal jolt to my deluded sense of tranquillity.

I suppose that it shouldn't have come as a shock to my addled mind that the festive season is upon us again but, as usual, it has sneaked up unannounced and tapped my shoulder in an accusing manner. No, I haven't been visited by Marley's ghost but the temptation to mutter humbug is never far away.



I don't know why I always seem to be caught out, but I am and a sort of hopeless paralysis sets in. You know, the sort of paralysis that afflicts a rabbit caught in the headlamp beam of a car.

That's what I feel when faced with seasonal shopping and the mass distribution of Christmas cards to far flung relatives and various other obscure species.

I will happily admit to being a world class procrastinator so that probably explains why I inevitably find myself tottering round crowded shops at the last moment, finding that what I had thought of as the perfect present for cousin X a couple of days ago has just sold out.

Maybe it would be better if I were to retire to my garret with a pot of gruel ...

But I jest. I have a *festive* heart. Well hidden, I agree, but there all the same. A subterranean pool of goodwill is ready to erupt in an all-engulfing flow of bonhomie that leaves friends and family shattered and beating a hasty retreat. Indeed, I have many happy memories of Christmas past, including the wonderful moment in a school nativity play many years ago. The manger was situated in the PE store to which the only entrance was through the audience. The teacher who was responsible for the production was looking on proudly when she stiffened in horror. The Holy infant was missing from a very empty manger. She looked my way with an anguished expression and I saw the Holy infant reposing on a table at the back of the hall. Thinking quickly, I picked the swaddled doll up and bowled it, with some precision, over the heads of the started audience. It narrowly missed the heads of the audience in the front row and landed just short of the manger, bouncing into the straw to be retrieved by

a rather confused Mary! Someone started to clap and then thought the better of it.

Mind you, my preferred mode of Christmas entertainment for *my* class was to put on a mummers' play. The advantage of doing this was that any child who was not in a speaking part could go in the dragon. Classes in those days were pretty large, so the dragon would often hold twenty or more children and would take quite a while to snake into the hall. One Christmas, I persuaded my fellow columnist, Tallen, to donate a CO² fire extinguisher from the airport fire service. I built a dragon's head large enough to contain two children and the extinguisher and instructed its occupants when to pull the trigger.

Well, the chairperson of the school governors and her husband were seated in the middle of the first row, along with the head teacher and other dignitaries. The dragon snaked its way into the hall and stomped up to the startled lady chairperson. Right on cue, inches from her face, it let out a huge plume of white CO² gas with a hissing roar. The chairperson and husband flinched, retreated back as far as their chairs would allow and vanished from sight in a white fog that slowly covered the rest of the audience. Success! And nobody ever repeated the trick. I wonder why?

Which brings to mind my attempt to produce a large mince pie for our school festivities. It was a masterpiece of engineering and was geometrically perfect.



It looked like the alien flying saucer in *The Day The Earth Stood Still*. I placed it in the oven and went away to read a book. Some time later, I was disturbed by a muffled thud from the kitchen. There was a smell of burnt mincemeat and a haze of smoke hovered close to the kitchen ceiling. I opened the oven only to see that it contained what looked like the results of a hideous biological experiment that had gone badly wrong. It took the best part of three hours to scrape the debris out of the oven. Nobody had told me that pies need holes to let hot gasses out!

Not to be deterred, I baked another and took it proudly into school. All the expert female staff looked at it with suspicion, made excuses and moved to another part of the room as though they were in the presence of a plague-ridden rat. Everyone was very polite about it but I had to take it home untouched. Never mind. If anyone had tried to mug me on the way home, one swipe with the pie would have crippled them for life. Pride does not allow me to say if I ate it or not but I have never baked another. You see, I learnt the secret of perfect mice pies.

You buy them!

And the thought of mince pies brings to mind a school production of A Christmas Carol that I took part in more years ago than I care to remember. Suffice to say that I played Tiny Tim!

All the stage lighting was home-made by the pupils and consisted of large jam tins fitted with 150-watt light bulbs. The whole lot was wired up with bell wire, which snaked its way up the hall stairs to the half landing where our pride and joy, the homemade dimmer, was installed. This consisted of a couple of large jars full of salt water into which were lowered electrodes made from bits of Meccano. The lighting operator was an intrepid fellow who wore rubber boots and rubber gloves just in case. It all worked – sort of. It sparked and sizzled in a satisfying way and didn't blow any fuses. The head teacher thought it was very clever.

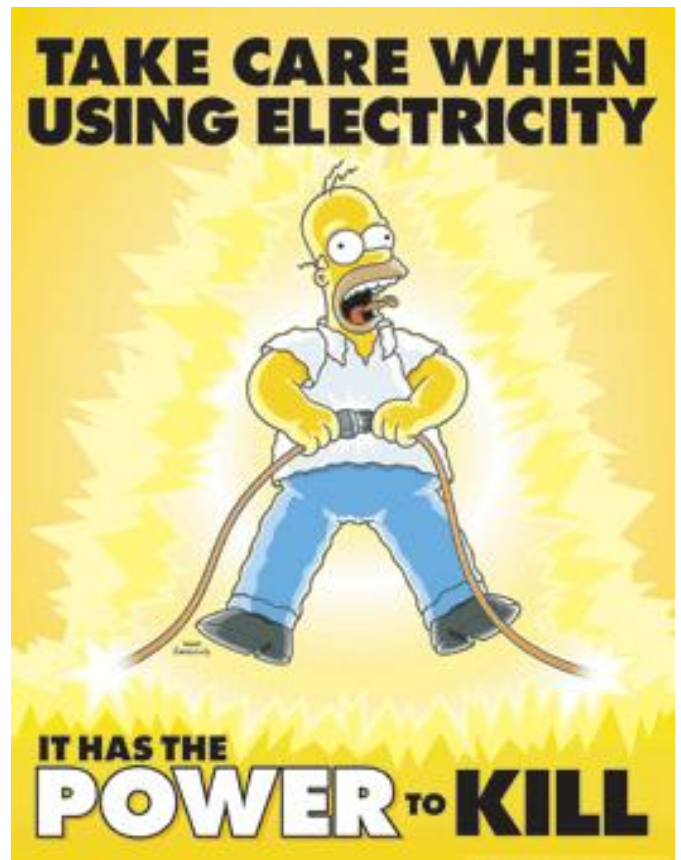
Did I hear anyone whisper health and safety? Cue hysterical laughter. We all survived, didn't we?

The goose that had to be consumed by the unfortunate Cratchit family was made from sections of cardboard pinned together. As the meal progressed, a mysterious hand would appear through the curtain behind the table and remove a bit of the carcass. The family round the table carried on, quite unperturbed, as the unseen thief stole their meal. The audience politely declined to notice.

Those readers who are familiar with A Christmas Carol will know that Tiny Tim is brought into the house on Bob Cratchit's shoulders. As I was, only he tripped and dropped me spread-eagled in the middle of the table

They even applauded when I sang a shaky rendition of Good King Wenceslas in my soprano (really!) voice.

Still, it was better than a part that I had in one of my prep school's Christmas plays. I played a green troll who wandered across the stage and informed the



audience that, "I'm Trog" before wandering off the stage in a rather disconsolate way.

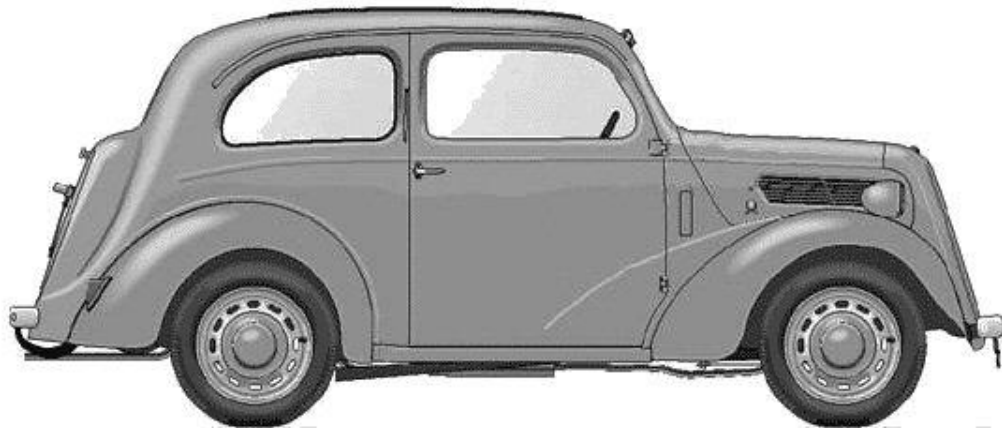
It's strange how easily the dust of memories can be stirred, waking nostalgia for times long gone and yet so near. And nostalgia is potent medicine. It shrinks the years and casts a golden glow on all it touches.

More memories were invoked the other day by the visit of an old college friend.

Hard to imagine that the two old codgers who went off to the pub were once a couple of twenty year old students!

We spent a happy day reminiscing about a world that seems strangely vivid and close in time even though over forty years have passed. You know, the days before mobile 'phones when you bought LPs and played them on Dansette gramophones. And Sergeant Pepper was new and cars didn't need MOTs.

Oh yes, the cars we had. Like Craig W****'s old Ford Pop. The sit up and beg version.



We got stopped by the police one night. Said officer solemnly checked every aspect of the vehicle while we all looked very meek and innocent. Finally, he had to admit that the car was roadworthy. Sighs of relief all round and Craig got back into the driving seat with a smirk on his face. There was a strange creaking sound and the driver's seat, along with Craig, vanished through the floor of the car in a cloud of rust fragments!

We lived in accommodation that would have most present day prisoners crying for their human rights lawyers. But we enjoyed every moment of our three years' training.

The hostels that we lived in dated from the Second World War and were basically army barracks with communal washrooms and fibreboard cubicles with enough room for a bed and a wardrobe.

That was a step up from the bare-boarded dormitories that I had slept in during my school years! I thought I was in heaven!

But we had fun in a way that simply wouldn't be possible today.

Maybe the times were more innocent or maybe we were more easily satisfied. Who knows? None of us had much in the way of material wealth or possessions and teaching was certainly no way to get rich – as my disappointed father was always reminding me.

But what price for a golden memory? Now that really is a question worth considering.

And now the hour is late and I think a small nightcap is in order. Just in case Marley's ghost comes visiting. In which case I'll give him a wallop with an old mince pie, have another snifter and go back to sleep again.

Perchance to dream.

Wake me up when the spring comes.



Paul Regeli, contributing editor (currently hibernating)

Buffy Bus



during term time calls

Tuesday	Thursday
11.30am-12.30pm	1.45pm-3.00pm
Takeley	Little Canfield
Station House	Warwick Road
Sycamore Close	Priors Green

Buffy Bus costs £2.50 per family, per visit,
please talk to our staff if this causes difficulties
Phone: 01799 522130 Email: info@buffybus.co.uk

Website: www.buffybus.co.uk

TAKELEY PARISH COUNCIL

The following are extracts from the September, October and November Parish Council minutes, which can be viewed on the TPC website: www.takeleypc.co.uk

Clr John Gregory attended the '**Uttlesford Future**' (27th Oct. 2011) which focused on Local Strategic Partnerships, Localism/Big Society

Clr Richard Cheetham attended a meeting with the **CAA re flight paths & noise**

Clr Carol Pratt attended the **STACC meeting** (26th Oct. 2011) to raise airport related parking and littering along Molehill Green Road and School Lane. BAA failed to answer the question. TPC has since received a letter from Mr. Roger Harborough (UDC) outlining UDC's commitment to keep the road free of litter, however there is evidence of fly tipping on private (BAA owned) land.

The Clerk will write to BAA to reiterate the question and request a response.

Members also agreed that the TPC should thank Mr. Roger Harborough, but make comment that the UDC service costs Uttlesford taxpayers to pick up airport related litter. TPC will request that UDC keep TPC informed of any progress in discussions with BAA, and clarify what the 'Uttlesford Ranger Service' is.

Clr Richard Cheetham attended the **South Uttlesford Community Forum** (4th Oct 2011):

- Essex Police Reform Programme
- Waste & Recycling
- New Homes Bonus Scheme

Communities & Local Govt - Local Planning Regulations consultation:

TPC approved the draft response recommended by the Planning Committee.

Draft National Planning Policy Framework:

TPC approved the draft response recommended by the Planning Committee.

UDC Review of Polling Stations:

UDC proposes retaining Silver Jubilee Hall & Molehill Green Village Hall, and in addition proposes Priors Green Community Hall for future polling.

TPC support this proposal.

Review of Essex County Council Corporate Vision Proposal:

TPC agreed the following comments:

- ECC should focus on doing the basics well.
- Improved speed of response
- Greater efficiency
- Delivering services
- Value for money
- Services that are outsourced must include robust checks and measurement.

The Clerk will incorporate these comments into a response required by 20/11/11

Boundary Commission - Parliamentary Constituency Review 2013:

Takeley Parish Council has reviewed the proposed Parliamentary Constituency Boundary changes and agreed the following comments:

- This is a mathematical exercise that realizes little benefit (reducing constituencies from 533 to 502 - 5%)
- The proposal creates many illogical mismatches with no reference to natural linkages of towns and villages.
- TPC empathizes with Hatfield Heath PC and will respond accordingly

New Homes Bonus Allocation to Takeley:

UDC has confirmed that TPC has been allocated £68 014 New Homes Bonus. UDC has also provided guidance notes on how the money can be obtained; which includes a process of consultation with the community. They have requested recommendations on how the money will be spent by 31st December 2011. TPC agreed that the priority should be to complete existing projects that TPC is undertaking based on previous public consultation. In addition a proposal would include a contribution of £8k to provide a toilet facility for the allotments at Lt. Canfield. TPC will request resident's feedback via the November Newsletter. TPC will then submit a proposal to meet the UDC deadline (31/12/11).

Projects for allocation of S106 & New Homes Bonus:

TPC agreed the following proposal:

- Recreation Ground Project (up to £35k) - phase 1 agreed May 2011
- Silver Jubilee Hall - Awaiting confirmation of plans from SJH Committee.
- Sports Fields Phase 1 agreed May 2011, recommend phase 2 – car parking £40k
- Lt Canfield Allotments - recommend £8k toilet facility

TPC agreed to publish the above list of projects in the next TPC newsletter to reaffirm public support for Recreation Ground Refurbishment and Sports Fields Development, to gauge public support for contributing to the Lt. Canfield Allotment project, and to request feedback on other community projects that residents would like to see TPC support.

2012/13 Budgets -schedule agreed. TPC approved a Precept of **£75k** (this will reflect the number of new homes coming on stream).

Request for donation from Victim Support: 88 referrals in Takeley in the past 12 months.

TPC agreed to donate £250.

Holy Trinity Churchyard Maintenance:

Rev. Rob Burles has written to TPC on behalf of the PCC to request a grant towards maintenance of the churchyard. TPC approved a grant of £1k

Essex Air Ambulance donation request: TPC approved a donation of £500.

Takeley Community Group:

As requested earlier in the year, Takeley Community Group has provided an update and has requested a further contribution to cover the costs of the Christmas party. TPC approved a contribution of £250 to provide Christmas presents for the children that attend the Christmas party (approx. 70)

Annual Audit Return 2010/11: TPC acknowledged confirmation of a 'clean' Audit Return for 2010/11

Station House - Lease arrangements:

The Chairman & Clerk reported on a meeting with ECC Cabinet Member 5/9/11. Essex County Council has accepted the counter proposal agreed by TPC in July. Takeley Parish Council will take a 3 year Lease of the whole of the ground floor of the Station House at an annual rent of £6000 plus outgoings effective from 1st September 2011. TPC will then explore the option to buy the Station House during the lease period.

TPC agreed to form a **working group** to discuss the detail of the lease arrangements, future operation and lettings charges, and potential purchase of the building.

Members received a proposal from a working group of members who met on 26th September 2011.

TPC approved a **3 phase strategic plan:**

1. To lease the ground floor from ECC & establish the Station House as a community building
2. Within the 3 year lease period, to investigate an option to purchase the entire building.
3. To complete the purchase subject to acceptable terms and price.

Charging policy

HIRE OF MEETING ROOM & USE OF KITCHEN - HIRE CHARGES

ROOM	Hourly Rate Mon-Sun 9am- 11pm	Block booking (min. 10wks)	All day hire Mon - Sun 9am- 11pm
Community Groups & Residents	£10 per hour	£9 per hour	£50
External & Commercial Hire	£15 per hour	£13.50 per hour	£100

Caretaker/cleaner: TPC approved an amended version of the specification and agreed to advertise the role in the next TPC newsletter.

TPC noted that some residents have expressed their disappointment that a commercial cafe is not taking over the Station House. TPC agreed that it would look at the potential for a part time cafe operation in the future.

Communicating with the Community:

Clr Nick Free introduced the concept of 'Takeley forum'.

Goal

A web based forum this will create an improved communication and publicity capability for the Parish of Takeley and the surrounding areas, to help understand local issues and to promote news and events within the area.

Purpose

Provide Takeley with an information source and interactive two way forum for local groups, clubs and potentially local small firms to share news on their activities, events, thoughts and ideas as well as providing a forum for local people to highlight issues and feedback on policy in a way that will support the creation, development and on-going review of the Parish Plan. The forum should provide an immediacy of communication and feedback that supplements the cycles of printed media (newsletters, grapevine etc.).

Sits alongside the council web site www.takeleypc.co.uk and has links to and from the existing site. Existing site remains the home (and document repository) for TPC and www.takeleyforum.com becomes the interactive, wider local area forum.

Management

Core management group will act as site administrator to publish and manage content on-going to keep the site updated, fresh and apply the appropriate moderation according to rules.

Cost

Estimated costs, excluding VAT.

Purchase of other domain extensions to restrict Cyber Squatters	£100
Design, set-up, establish customer management system, content management system, templates, profiles, privileges, blog pages, local community/business advertising slots	£1200
First year annual hosting cost	Included in design costs above
Optional set-up of Billboard page and workflow (max 2 days consultancy and development)	£800
On-going annual hosting and server support costs	£80 p.a.

TPC thanked Clr Free and agreed that this is an important element to increasing community cohesion, and developing an opportunity that enables the community to fully participate in the spectrum of local issues. The Council resolved to sponsor this initiative and to provide £2500 from the 'Community Projects' fund towards start up costs. TPC agreed that the Clerk should work with Clr Free and his wife to explore the best IT solution which will then be presented to the Parish Council for ratification.

TPC approved:

- Draft contract
- Authorised payment to £1k + vat deposit.
- Authorised Clr Nick Free and the Clerk to progress the contract.

Report on Highways Matters:

- A resident of Morrells Green requests that TPC take urgent action to alleviate parking problems on the development. He would like to see the extension of the parking restriction scheme throughout the development.
The Clerk confirmed that these concerns have been forwarded to the local Police Team and to ECC Highways.
TPC is sympathetic to residents' concerns; however TPC has no statutory powers relating to Highways. TPC will continue to represent residents' views and to liaise with the relevant authorities.
- Lesley Gillman, resident of Little Canfield, who organises local walks, has reported that Jacks Lane is overgrown and the right of way is blocked. The Clerk has informed her that TPC will be discussing maintenance of Jacks Lane at this meeting. It was also reported that footpaths in the vicinity of Takeley Church and A120 balancing ponds have been recently cut and cleared.
- Mr. Martin Peachey (resident) reported concerns regarding 2 serious accidents at the Four Ashes junction recently. It is evident that many drivers are jumping the lights. The Clerk will report to ECC Highways & request support from the Police.
- TPC noted correspondence from residents of North & South Road re airport related parking and a resident of Morrells Green re. parking problems. TPC is sympathetic to residents' concerns; however TPC has no statutory powers relating to Highways. TPC will continue to represent residents' views and to liaise with the relevant authorities.

ECC 2011/12 Winter Salt Scheme:

TPC agreed to continue with the ECC Winter Salt Scheme (joined pilot scheme 2010/11) which provides a salt supply to the village which is controlled by TPC and distributed by registered volunteers.

TPC also agreed:

- To purchase a salt bin for Roding Drive (liaise with Andrew Fisher – Countryside Properties re positioning on corner of junction Roding Drive/B1256.
 - To position a salt bin at the Four Ashes junction
- Mr. Martin Peachey (resident) submitted a written report:
Community Speed Watch: sharing radar gun with Hatfield Broad Oak later in November. Will focus on Brewers End.

Traffic Calming Measures in Takeley Street:

Members received a report from a meeting with ECC Highways reps 17/8/11:

- Essex Police have agreed to conduct an **origin/destination survey** on HGV's travelling along B1256/Takeley Street (east & westbound)
- **Jctn 8 M11 signage:** B1256 is a designated route for Elsenham lorries (cannot go thr' Stansted)
- Change signage to indicate Elsenham Quarry only (Chris Stoneham)
- Work with the Highways Agency to review lorry signage on Jctn 8 (Chris Stoneham)
- **Re-quote for components of traffic calming scheme** (new contractor will be engaged Autumn 2011)
- **Pedestrian islands/central islands** maybe able to be funded in 2012/13 Localism budget. TPC to agree scheme before Xmas – November newsletter consultation)
- **Relocation of flashing sign** – Rissa to contact Camera Safety Partnership (who installed it)

Clr Carol Pratt & the Clerk presented a location map with photographs demonstrating the options for a range of traffic calming measures in Takeley Street. TPC agreed the draft proposal that will be available for public consultation in the November/December newsletter.

TPC will then confirm requirements to ECC Highways before Christmas so that the agreed scheme can be costed and put forward to ECC Highways capital budget programme.

Clr Nick Free requested that TPC consider a suitable road surface ('Tarbanding' is very slippery in the wet. 'Shell grip' would be more appropriate).

UDC Changes to Waste Collections for Spring 2012:

Proposal to introduce kerbside glass recycling, smaller kitchen caddies (brown-lidded bins), and subscription based kerbside garden waste collection service. Residents will pay a one-off £20 for a garden waste bin (same size as current green lidded bin) and then approx. £40 per year for

Fortnightly collections between April and November. The proposed changes will save UDC £300k.

Continued weekend skip service will cost £50.52 per hour. The Clerk has requested a quote from UDC to continue the weekend skip service which would cost £1720. Members suggested that it is likely that a significant number of residents would support continuation of the weekend skip service.

UDC has offered a 50% discount for year 1. LCPC has agreed to share the cost with TPC.

TPC confirmed intention to continue the weekend skip service.

Takeley War Memorial:

Following the rededication of the War Memorial on 24/9/11, members agreed that this had been an exceptional community event and thanked both Clr Trevor Allen and Mr. Pat Salmon for all their efforts.

Maintenance of Jacks Lane:

Jacks Lane is a byway owned by the Lord of the Manor.

The long term aim has been to prevent Jacks Lane being used as an exit/entry point to Priors Green, and to prevent the use of motorised vehicles along the byway. It is now dissected by crossing points for Priors Green residents and if not controlled is a potential danger to drivers, pedestrians and horse riders. The landowner has already had an application to downgrade the byway to a bridleway refused by Essex County Council.

Clr Geoff Bagnall has spoken to Gary White (Essex County Council) regarding Section 249 Town & Country Planning Act with a view to 'extinguishing rights'. Clr Bagnall has suggested that this should be done in conjunction with the landowner, Countryside Properties, Takeley Primary School, adjacent residents, and UDC. TPC also agreed representation can be sought from Bambers Green Riding School, Ramblers Association (local), William Chastell (local cycle routes).

Clr Alan Jones expressed the concerns of some Jacks Lane residents about promoting Jacks Lane as an exit/entry point to Priors Green. TPC agreed that this would not be the case however, if Jacks Lane was a safe footway it would be feasible that some residents/pupils may use this route as a pedestrian access to the school.

Recreation Ground & Sports Field Report:

Clr John Green has completed an inspection & reported:

Recreation Ground: Site is tidy & equipment in good order.

Rubbish bin has been burnt to the ground by vandals. Police are aware.

Trim trail bottom chain requires tightening.

Sports Field: Site is tidy & equipment in good order

The Clerk confirmed that TPC's nomination to the **QE2 Fields in Trust** had been successful and that all members and residents should be encouraged to vote for the sites via the Fields in Trust website before the end of November.

Local Policing & Public Safety Issues:

Chief Constable Jim Barker - McCardle has written to parish councils explaining further details of Essex Police Reforms. In an online survey 62.6% stated that they had not visited a police station in the past 12 months. When asked 94% said they would report a crime via the telephone. Attendance by the public at Police Stations across Essex has been monitored and demand is very low. Under the new Blueprint there will be an increase in the number of police officers in neighbourhood policing (approx. 12%) increasing the visible police presence. Stations will be open to the public at the times they are most used. 9 core stations will open 8am-12 midnight, 7 days a week. 16 stations will offer a counter service from 12 noon-6pm Monday - Saturday. 96.6% of the population will be within 10km of a police station.

A Crime & Incident Management Bureau (CIMB) will provide an enhanced 24 hr service for anyone reporting a crime or anti social behaviour.

The proposal includes 21 stations where the front counter will be closed.

Essex Police anticipate savings of £12.5m.

Holy Trinity Churchyard is becoming full. The PCC is not accepting any more reservations for grave space. Rev. Burles suggested a meeting with TPC to discuss plans for the future grave/burial provision. Ultimately when all grave space is full the Church would look to UDC to find a solution, however the PCC would like TPC to be involved. Chairman Clr Richard Cheetham suggested a meeting with Parish Council representatives.

For further information about Takeley Parish Council please contact the Clerk or visit the website: www.takeleypc.co.uk

Jane Heskey, Takeley Parish Council, Station House,
Sycamore Close, Takeley, Essex, CM22 6QA

Phone: 020 8270 1149

Email: Takeley.pc@ntlworld.com

DIAMOND JUBILEE CELEBRATIONS 2012

To mark 60 years of the Queen's reign the Diamond Jubilee will take place in 2012.

The celebration will centre round the first week of June. The Government has announced plans for a special four-day Jubilee weekend (Sat. 2nd-Tues. 5th) allowing communities time to come together to celebrate & commemorate the events of the last 60 years.

The Parish Council has allocated funds to sponsor community events. Please contact us with details of any community events that you are organising.

Takeley Parish Council, Station House, Sycamore Close, Takeley, Essex, CM22 6QA

Email: Takeley.pc@ntlworld.com

TAKELEY PARISH COUNCIL

MEETING SCHEDULE 2012

Meetings start at 7.30pm & are held in the Station House, Sycamore Close, unless notified otherwise.

JANUARY 11th	FEBRUARY 1st	MARCH 7th	APRIL 4th
AGM MAY 9th tbc	JUNE 13th	JULY 4th	AUGUST 1st
SEPTEMBER 5th	OCTOBER 3rd	NOVEMBER 7th	DECEMBER 5th

USEFUL TELEPHONE NUMBERS

Police - non-emergency	101
Consumer Direct	08454 04 05 06
Fire and Rescue Service - non emergency	01376 576000
Emergency Gas Escape number	0800 111 999

Telephone numbers to use verify the identity callers

Severn Trent Water	0800 783 4444
E-on	0800 052 0346
general enquiries	
Sales agent verification	0800 056 6278
Npower	0845 601 1102
Field sales	
Meter readers	0800 073 3355
Scottish and Southern Energy	0800 0155 170
EDF Energy	0845 300 1291
Scottish Power	0800 400 200
British Gas meter readers	
MSL	0800 169 4667
Accuread	0800 393 499
Siemens	0800 015 2221
British Gas Field Sales Advisers	0800 300 100
British Gas Engineers	0845 736 5100

In an emergency please call 999

TAKELEY PARISH COUNCIL

BUDGETS 2012-13

INCOME	£
Balance Carried Over Est.	32681
Precept	75000
VAT Refund	3000
Bank Interest	50
Advertising	1000
Station House Hire	5000
GRAND TOTAL INCOME	84050

116731

EXPENDITURE

EMPLOYEES 26470

ADMINISTRATION 24050

PARISH SERVICES

Sports Field / Greens Maintenance }	10000
Recreation Ground Maintenance }	1300
Village Maintenance	3000
Plant Budget	200
Green Waste Collection	1000
Seats / Bus Shelters Maintenance	500
Water - Sports Field	200
Electricity - Sports Field	200
Electricity - Street Lighting	100
Total	16500

PROJECTS

Professional Advice Fund	1000
ICT Equipment	1000
Youth/Community Projects	10000
QE II Diamond Jubilee	6500
Total	18500
S137-Community Group funding	6000
VAT	1000
GRAND TOTAL EXPENDITURE	92520

Projects

Rec Ground refurb.
Sports Field - Youth Football
SJ Hall Development
Takeley Forum
QE II Diamond Jubilee
Lt Canfield Allotments

2012/13 PRECEPT = £75K

PARISH COUNCIL ELECTIONS – MAY 2012

In May 2012 elections will be held to fill 13 posts on the Parish Council.

The size of the Parish Council is increasing (+ 2 members) to reflect the increasing population of Takeley parish.

What do councillors do?

Councillors have three main functions:

1. **Decision making** - Through meetings and attending committees with other elected members, councillors decide which activities to support, where money should be spent, what services should be delivered and what policies should be implemented.
2. **Monitoring** - Councillors make sure that their decisions lead to efficient and effective services by keeping an eye on how well things are working.
3. **Getting involved locally** - this may include community groups, maintaining/improving recreational facilities, planning matters, highways, footpaths, local policing, influencing national and local policy.

How much time does it take up?

Quite often councillors say that their duties occupy them for about three hours a week. Obviously there are some councillors who spend more time than this - and some less, but in the main, being a parish councillor is an enjoyable and rewarding way of contributing to your community; helping to make it a better place to live and work.

Councillors are generally elected every four years.

You have to be:

- A British subject, or a citizen of the Commonwealth or the European Union; and
- On the “relevant date” (i.e. the day on which you are nominated or if there is a poll the day of the election) 18 years of age or over;
- Have during the whole of the 12 months preceding that day occupied as owner or tenant any land or other premises in the council area; or
- Have during that same period had your principal or only place of work in the council area; or
- During that 12 month period resided in the council area.

In the case of a sitting member of a parish or community council you can also satisfy the criteria to be elected if you have lived in the council area or within 3 miles of it for the whole of the 12 months preceding the “relevant day”.

You cannot stand for election if you:

- Are subject of a bankruptcy restriction order or interim order.
- Have, within five years before the day of the election, been convicted in the United Kingdom of any offence and have had a sentence of imprisonment (whether suspended or not) for a period of over three months without the option of a fine.
- You work for the council (but you can work for other local authorities, including the principal authorities that represent the same area).

If you are interested in joining the Parish Council please contact the Parish Council Clerk - Jane Heskey or further information: Email: Takeley.pc@ntlworld.com or Write to: Takeley Parish Council, Station House, Sycamore Close, Takeley, Essex CM22 6QA

STATION HOUSE CARETAKER

Takeley Parish Council is tendering a contract for self employed caretaking services to manage Takeley Station House. The Station House is a community building leased by Takeley Parish Council. It provides office and meeting facilities for the Parish Council and local community groups. The concept is new, and the successful candidate will demonstrate a degree of flexibility that can adapt to the evolution of the new facility. The contract will be on a part-time basis.

What is the work like?

The Caretaker is responsible for the care and upkeep of building (initially internal ground floor only). Although a lot of time may be spent working alone the caretaker will come into contact with a variety of people including councillors, business representatives, members of the public, contractors working on the site and the police. The caretaker will supervise contractors that attend the building.

Maintenance

The Caretaker is responsible for making sure the building is in proper working order.

- Carrying out minor repairs such as changing light bulbs and painting.
- Turning heating and lighting on and off at appropriate times.
- Making sure the premises are clean and that rubbish is collected and taken away, and any graffiti is cleaned up.
- Maintaining the grounds and removing litter.
- If there is a major fault, the caretaker will call in specialist contractors, such as a plumber or electrician, and will also arrange for contractors to come on site when necessary.

Security

The Caretaker is responsible for who comes on to the site and the security of the building.

- The caretaker is required to be the main key holder & to respond to alarm call outs.
- May have to report some incidents to the police.
- Unlock the building in the morning before people arrive and then lock up at the end of the day.
- The caretaker will also be in charge of letting people in who have hired rooms.
- Maintain a visitor's diary.

Other duties will include:

- Arranging chairs and tables for meetings and clearing away afterwards
- Storing equipment and supplies safely
- Understanding fire safety regulations, Health and Safety regulations (including safe lifting & working at height), emergency procedures and the rules for evacuating a building
- Replacement of consumables (Soap, toilet rolls, hand towels)
- Replacement of lighting tubes/lamps
- Portable appliance testing
- Maintaining a variety of records and monitoring meter readings and fuel usage

Caretakers spend most of their time on their feet, bending and lifting and sometimes climbing ladders. For some jobs, protective clothing such as gloves, overalls and goggles are worn.

For further details contact the Clerk Jane Heskey via email at takeley.pc@ntlworld.com or write to: Takeley Parish Council, Station House, Sycamore Close, Takeley, Essex CM22 6QA

2011/12 WINTER SALT SCHEME

The Parish Council has agreed to continue with the Essex County Council Winter Salt Scheme (joined pilot scheme 2010/11) which provides a salt supply to the village and is controlled by TPC and distributed by registered volunteers.

Salt bins will be positioned at:

- Roding Drive corner of junction Roding Drive/B1256.
- Four Ashes junction, B1256

“Singing from the Heart”

Singing from the heart will be held on Wednesday the 14th of December so adjust your diaries please, there will be NO meeting in January and we shall continue again on the 15th of February and every third Wednesday thereafter.

The singing has been a huge success here in Takeley and a huge thank you must go to our voice coach Angela Dennis, it would never have happened but for her dedication to her profession and her desire to have the world singing in harmony. So keep your instruments fine-tuned over the Christmas and New Year and practise whenever and wherever you can.

For anyone who wishes to join in in our musical fun evenings then please contact me Paul Burnett 01279870578 paul@pburnett1.orangehome.co.uk

Big improvements are being planned for Uttlesford's waste collection service.

Subject to Cabinet approval, the changes will be put in place in Spring 2012 and will give a better waste and recycling collection service to residents. The changes will mean that glass bottles and jars can be put in the green-lidded bin. The brown-lidded bin, which many residents find is too big for their kitchen waste, will be replaced with smaller kitchen caddies.

The council is also looking at the possibility of introducing a subscription-based garden waste collection service – **but needs to know now whether residents would be interested in this new service.**

The charge for the service would be £40 for the year, plus an additional one-off charge of about £20 to cover the cost of the bin. Residents who pay this subscription will receive an additional wheeled bin which will be the same size as the current green-lidded bin in which they can place all their garden waste. This bin will be emptied fortnightly except between December and March.

Although residents do not need to commit to this service now, if they are interested in it they should register for it during the next few weeks. A simple registration form is available from the homepage of the council's website at www.uttlesford.gov.uk or at www.uttlesford.gov.uk/recycling

The viability of the garden waste collection service depends on the number of people who register and where they live in the district. Residents can share a bin with a neighbour if they wish.

Other changes being planned for next Spring include moving to a four-day week for collections; changes to, or the removal of, the "village skip" green waste collections and ending the village civic amenity skip service. In addition the council is looking at removing public bottle banks from some car parks as these will no longer be needed once residents can recycle glass in their green-lidded bins.

Cllr Susan Barker, Cabinet Member for Environmental Services, said: "These are significant changes that will affect the majority of residents in the district in some way, if only because their collection day will change as a consequence of moving to a four-day week.

"There will be plenty of publicity around the changes as we get closer to next Spring, but we really need to find out now how many people would be interested in the garden waste service. This service can only go ahead if enough people take advantage of it. In September, the Cabinet will be making the final decision about these improvements and at that meeting we will be reporting the potential interest in the garden waste service.

"So if you think you would like to have your garden waste collected from your property, it is very important that you register an interest before the end of August.

"While the current three-bin system has proved very successful and has led to the district having one of the highest recycling rates in the country, there are three issues

which over the years people have repeatedly said they would like addressed – the lack of kerbside glass collection, the size of the brown bin and the arrangements for collecting garden waste. I'm very pleased that these proposed changes address all these points and would make the system even better for everyone who uses it.”

The council is able to make these improvements because its fleet of refuse vehicles is up for renewal. There have been significant technological advances since the council last renewed its fleet which means it can take advantage of new multi-stream collection vehicles which allow kitchen waste and recycling/non-recycling to be collected by a single lorry.

In addition, the processing plant where the district's recycling goes can now accept glass mixed in with other recyclable items.

It is anticipated that these changes will result in significant savings of around £300,000 depending on the exact policy set by the council for delivering the waste service in future years. The council needs to reduce its running costs by £2 million over the next few years because of cuts in central government funding. Savings made from the improvements to the recycling and waste service will go towards this.

GREEN WASTE RECYCLING

WE NEED YOUR VIEWS.....

Changes to Waste Collections for Spring 2012

Proposal to introduce kerbside glass recycling, smaller kitchen caddies (brown-lidded bins), and subscription based kerbside garden waste collection service. Residents will pay a one-off £20 for a garden waste bin (same size as current green lidded bin) and then approx. £40 per year for fortnightly collections between April and November. The proposed changes will save UDC £300k.

Continued weekend skip service for green waste will cost approximately £1720 per annum. This equates to approximately £1 per household. Parish Council members believe that it is likely that a significant number of residents would support continuation of the weekend skip service.

TPC has notified UDC that it intends to maintain the green waste weekend skip service (April - Nov) providing residents confirm their interest and the price remains as quoted.

Please email or write to the Parish Council if would make use of the weekend skip service (April - November) at Takeley Sports Field.

Email: takeley.pc@ntlworld.com

Address: Station House, Sycamore Close, Takeley, Essex CM22 6QA

TAKELEY STATION HOUSE

Sycamore Close, Takeley, CM22 6QA

Takeley Parish Council has worked tirelessly for many years to secure the future of the old railway station building which lay empty, falling into disrepair, and the subject of frequent vandalism. The Parish Council has long held the opinion that the building should be safeguarded as a community building. Renovations were eventually undertaken by Essex County Council who offered to share the building with the Parish Council.

The Parish Council has recently secured tenure of the entire ground floor of the building and is now in a position to open up this extraordinary building for use by other groups/members of the community. This is truly a beautiful building that, as a smaller venue, offers users a different type of facility, in a central location that is easily accessible, with use of a kitchen.

If you would like further details or wish to view the Station House please contact the Parish Council Clerk - Jane Heskey:

Email: takeley.pc@ntlworld.com

Or phone: 0208 270 1149

HIRE CHARGES

HIRE OF MEETING ROOM & USE OF KITCHEN

ROOM	Hourly Rate Mon-Sun 9am-11pm	Block booking (min. 10wks)	All day hire Mon - Sun 9am-11pm
Community Groups & Residents	£10 per hour	£9 per hour	£50
External & Commercial Hire	£15 per hour	£13.50 per hour	£100

TAKELEY PRIMARY SCHOOL

"Learning and Achieving Together"



We've done it! We have met the Food for Life Partnership criteria for Gold and have therefore been awarded their Gold award, the first school in the east of England to achieve this! A big thank you to all staff, children, governors and parents for their continued support and especially to our 'Snaglets' for their fantastic presentation to the inspectors and Mrs Kim Griffiths who has led this initiative, it is a real achievement and we are very proud to be a gold standard school.

I am pleased to say that we are the first school in the east of England to be awarded the Gold award from the 'Food for Life Partnership', in recognition of our continuing work to improve cooking, growing and school meals provision within our school and community. We have achieved this by having all our classes organically growing fruit and vegetables as part of their class work thus covering many areas of the curriculum. The older children are able to grow in the raised beds known as 'Reggie's Garden' at the Prior's Green Home, we are very grateful to the home for enabling us to do this. As for cookery, all the children are receiving cookery lessons, where they learn how to handle utensils correctly whilst following healthy recipes, the children are also encouraged to try the recipes out at home. We have also been running an after-school cookery club for parents and children to cook together. In years 3 and 4 the children are visiting a local organic farm on a termly basis to see the changes throughout the season and carry out planned activities, thank you to Ken Wooding and James Rae for letting us come. Half termly we hold our School Nutrition Action Group (SNAG) meetings, where our children (Snaglets), staff, cooks and parents come together to share ideas and look at new ways of doing things. Our school cooks have also worked incredibly hard to reach the criteria for gold, we have just launched our new menu which is

extremely popular with the children and full of healthy and appetising meals made from high quality ingredients. We meet the criteria by cooking all our school lunches on site with at least 75% freshly prepared from scratch, 50% of the ingredients being locally sourced and 30% being organic. All our meat served is freedom food certified and our fish is MSC certified coming from sustainable sources and all for only £1.85 a day for two courses and a drink.

Christmas at School is always a magical time, the infant children are busy rehearsing for their nativity play 'Hosanna Rock'. However Christmas is a time for giving and thinking of others therefore our children, staff and parents are currently putting together shoeboxes to send to the troops in Afghanistan to help make their Christmas just that little bit more special.

Mandy Line, Headteacher



OVENCLEAN®

The original oven cleaning specialists

Ovenclean will transform your oven and put the sparkle back into your kitchen!

Local, friendly, professional, reliable, fully insured, eco-friendly cleaning, no fumes, no mess, no bother

Removes grease, fat and burnt on carbon deposits from:

- Ovens
- Extractors
- Microwaves
- Ranges
- Grills
- Filters
- Hobs
- AGAs

Produce this advert for a 10% DISCOUNT

Call Martin Stedman on

07794 259003 or 0800 840 7127

www.ovenclean.com

PROPOSED TRAFFIC CALMING SCHEME FOR TAKELEY STREET

Travelling west to east along Takeley Street

	Pinch Point	Pedestrian Refuge Island	Central Island	Location & comments
West				
A	✓			Village Gates
B			✓	Just past Taylors Farm entrance Central Island or pinch pt – maybe to tight for pinch pt.
C OR D		✓		North side - 'Pussy Willows' Southside – 'Montjoy' There are bus stops either side of the road nearby. OR North side - 'Revoan/Woodfield' Southside – 'Twin Ash'
E OR F	✓			North side - 'Stansted Airport Lodge' Southside – 'Coppice Close' OR North side - 'Lynwood/Josephs' Southside – field
G		✓		North side - 'Holly Tree Cottage' Southside – 'Endova/Woodbriars'
H			✓	North side - 'Joyners' Southside – Lay-by & bus stop
I		✓		Street Farm East of Bush End turning
J East	✓			Pincey Brook nr 40mph signs
	3	3	2	

PROPOSED TRAFFIC CALMING SCHEME FOR TAKELEY STREET

Residents Survey

As you will be aware from previous Parish Council minutes, residents of Takeley Street have asked the Parish Council to resurrect a proposal for traffic calming measures in Takeley Street.

Essex Police have confirmed that the only way to reduce the speed of traffic along this stretch of road is through the introduction of physical measures. Having met with Essex County Council Highways, it has been agreed that once the Parish Council has confirmed a proposal the County Council will design and cost the scheme which will then be adopted as an Essex Highways Capital Programme.

The Parish Council seeks your views before concluding a proposal for the scheme and briefing ECC Highways to meet their 2012/13 budget deadlines.

	Delete as applicable	
Do you support the proposal?	<input type="checkbox"/> YES	<input type="checkbox"/> NO
Are you a resident of Takeley Street?	<input type="checkbox"/> YES	<input type="checkbox"/> NO

COMMENTS: (please include contact details if you require a response)

Please cut along the dotted line & return your survey (by post or hand deliver) to: Takeley Parish Council, Station House, Sycamore Close, Takeley, Essex CM22 6QA or email a response to takeley.pc@ntlworld.com

Thank you

THIS CONSULTATION CLOSSES ON 31st DECEMBER 2011

COMMUNITY PROJECTS 2012/13

** There is approx. £65k available from S106 monies (enhancing local sports/ community facilities) contribution and £68k New Homes Bonus Allocation**

PROJECT	COSTING (£)	TPC contribution	DETAIL	COMMENT
Recreation Ground Refurbishment Project	up to £35k	£35k	Agreed May 2011	General recreation & play area for children under 12. Phase 1 - replacement/new equipment - surfacing repairs/replacement
Silver Jubilee Hall Development.				Awaiting confirmation of plans from SJH Committee.
Sports Field - Youth Football Development	£45k	£20k	Phase 1 TPC reserved £25k (May 2011) £20k required	Working with TFC to develop FA approved facilities for Takeley children (7-16 yrs). Total cost of project £500k - £1m May 2011 agreed Phase 1: - Drainage & quality of field - £40k - Additional portacabin/changing facility £5-6K
Sports Field - Youth Football development	£75k	£40k	Phase 2	Car park
Lt. Canfield Allotments - Toilet facility	£8k	£8k	For community use including Takeley Primary School & those with disability.	Toilet facility (providing land is in the ownership of Lt Canfield PC or Allotment Assoc).
OTHERS		103K		£103k allocated & 30 reserved.
Pursue new stop & shelter at Canfield Rd	£1k			Priors Green S106 monies – ECC Transport budget?
Parish Plan	£1k			
Quality Status	£200			Fees
Takeley Forum	£2.5k			Agreed Sept 2011. Deposit paid Oct 2011
Diamond Jubilee	Up to £6.5k			Commemorative mugs for children of Takeley Primary School & SJH Pre School: 500 x £2.56 = £1280 Bunting = £220 Sponsorship of local event(s) = up to £5k

The Parish Council would like confirmation from residents that these projects are supported, and requests feedback on other community projects that residents would like to see the Parish Council support.

From the Village Recorder

To quote Michael Caine [allegedly], not many people know that the Emperor Claudius marched his elephants down the origin of Stane Street when he went to Colchester during the A.D.43 invasion. I have to admit that I did not know this either, but Richard Till who is doing the current W.E.A. lectures on the Boudiccan Revolt assures me that it is well documented. The reaction of the local inhabitants to these huge animals must have been one of complete terror, especially if they trumpeted as they went.

This is such a fascinating snippet of information that it needed to be shared, even though it has no relevance whatsoever to the rest of my report.

The business sections of the papers have been making much of the recent increase in rented properties and the gradual increase in their rents. People have rented and paid rent for many centuries in Britain. There is nothing unusual in this. What is unusual to us is the rent they paid.

Rents of 4d. per annum, 20 marks of silver or a "bezant" [a gold coin originally minted in Byzantium], may have little relation to the prices of today, but the concept of a money payment is quite usual to us.

Less usual are the rents of 1lb of pepper at Christmas paid in 1211 by Geoffrey de Hauville. A few years later William de Hauville is paying his brother Geoffrey 1lb of cumin. Another de Hauville called Ralph in the same period paid 1lb of wax. The de Hauvilles held the northern Manor of Takeley which covered Colchester and Waltham Halls in later centuries. It was Geoffrey who gave the church of St Mary to the Bishop of London. This is now Holy Trinity church.

A grant to the Abbot of Tilty mentions a candle of 1lb of wax which was to burn for St. Thomas Martyr, from the first vespers, day and night until after completion of the deed and then to be extinguished. This suggests that the rent of wax was presumably to make candles. 4s 2d together with a lb of both pepper and cumin marked an expensive rent. This value of pepper is still retained in the expression in Welsh that something is "as dear as pepper".

None of these are as difficult for us to accept as the gift of services from serfs, together with the gift of the serfs themselves. About 1234 Philip de Hobregge granted to Roger de Roing, clerk and Andrew his son, the homage of Walter son of Ralph, son of Clarice with all his services, tenements and progeny. This family had been, and obviously were to continue to be serfs or slaves.

Sometimes the serf would be given back in rent at a later date, as when in the reign of King John David de Thelemo returned his man to William son of William de Takeley, with a horse and a hawk. Slavery only died out totally in the early years of Elizabeth I. Theoretically it was condemned by the church. Another feature in this deed that we are not accustomed to, is the mention of Andrew the son of Roger de Roing, clerk. Clerical celibacy was still only a nominal concept at this period and Takeley deeds have many mentions of the

sons of clergy. It would be the next century before clerical celibacy began to be totally accepted.

Some rents were more personal. Geoffrey de Hauville and his heirs were to have “certain white gloves” annually at Easter. Palfreys and hawks were other favoured rents

Manorial records have rents of eggs, chickens and geese as standard payments.

Finally the most charming rent of all is the red rose that the White family of Whites Farm paid for land by the church. This was to be delivered in June when hopefully the bush was in flower

Nia Watkiss

A banner with a yellow background and a blue and white checkered border. The text "NEIGHBOURHOOD POLICING" is written in white capital letters on a blue rectangular background.

NEIGHBOURHOOD POLICING

Contact your local officers:

Hatfield Heath Neighbourhood Policing Team

Are here to help! Please raise to us any issues or concerns you may have about your neighbourhood.

PC Brad Healey

e-mail: 1712@essex.pnn.police.uk

PCSO Jo Trevail-Phillips

e-mail: 73377@essex.pnn.police.uk

PCSO Emma Webb

e-mail: 71226@essex.pnn.police.uk

Telephone: Non-emergency: 101 (*ask for incident room or officer*)

Neighbourhood Mobile: 07779 316979

Right up

your street

Neighbourhood Policing Team



www.essex.police.uk



Obstructions and Airport Parking

Dear resident,

Recently Essex Police has been receiving a number of calls in relation to airport parking, mainly causing obstructions in the area.

Essex Police can only deal with a vehicle obstruction if it meets the following criteria:

- A vehicle parked in a dangerous position
- An Obstruction to the pavement, not allowing persons to pass freely
- A vehicle causing an obstruction of the road or drive (blocking the drive)
- A skip causing an obstruction or in a dangerous position
- Any other impediment of the free flow of traffic

If the vehicle meets the above criteria an officer, once contacted will be deployed to investigate. If the nature of the obstruction does not fall into the above categories there will be no police attendance.

An officer will not be deployed to airport related parking if the vehicle is taxed, insured and holds an MOT.

You can report any airport related parking issues to BAA Stansted on the following number

BAA airport parking hotline: 0800 731 2385

This is a central database. A list of all cases goes to the Stansted Airport Highways Working Group (which includes BAA, Essex County Council Highways and Uttlesford District Council) which identifies 'hotspots'.

Where recorded evidence supports identification of a 'hotspot' BAA may contribute financial assistance to the statutory authority (ECC Highways) to provide a solution. Neither ECC Highways nor Uttlesford District Council support resident parking schemes where off street parking is available.

Contact Essex Police

Non-Emergency number- 101
Local NPT mobile 07779316979
Emergency- 999

Kind regards,
Hatfield Heath Neighbourhood Policing Team

Spoiling our village

A number of recent events have resulted in damage to our village:

- 30mph signs in Parsonage Road have been vandalised with graffiti
- In Takeley Street the speed camera has been vandalised.
- In the Recreation Ground, off Chestnut Way, the rubbish bin was set alight and burnt to the ground.
- Outside the village shops and along the B1256 footway between Priors Green and the Four Ashes dog fouling is prolific. In 2012 this will be the 'walk to school' route for our children attending Takeley Primary School. **Please ensure that you clean up after your dog, and show consideration for your community.**

If you have information regarding any of the above please contact the Parish Council or Local Police Team.

AIRPORT PARKING

Please report on street airport parking to
BAA Hotline: 0800 731 2385

This is a central database. A list of all cases goes to the Stansted Airport Highways Working Group (which includes BAA, Essex County Council Highways and Uttlesford District Council) which identifies 'hotspots'.

Where recorded evidence supports identification of a 'hotspot' BAA may contribute financial assistance to the statutory authority (ECC Highways) to provide a solution.

Neither ECC Highways nor Uttlesford District Council support resident parking schemes where off street parking is available.

The Parish Council has no statutory powers relating to Highways.

The Parish Council will make representations to UDC and ECC Highways Dept regarding airport parking issues but is **only** the statutory bodies (UDC & ECC Highways) that have the powers to act.

Thank you

Graham School *of* Dance



Highest standard dance
classes for children
from age 3 – 7:

- **BALLET** (Royal Academy of Dance)
- **TAP** and **MODERN DANCE**



held on **MONDAYS** at
the **Silver Jubilee Hall,**
TAKELEY

Classes for older pupils, along
with Street Dance, Drama and
Musical Theatre for children 6+
available in Bishop's Stortford.

Classes also in Stansted,
Sawbridgeworth, Buntingford &
Church Landlev.

*We are a happy, successful dance school and our talented
pupils regularly win places with national dance companies
& schools such as The Royal Ballet School & Tring Park,
gain excellent exam results, & take part in dance festivals
and professional pantomimes*

FOR FURTHER DETAILS & A FREE PROSPECTUS:

Telephone: **01279 654423**

E Mail: **info@grahamschoolofdance.co.uk**

www.grahamschoolofdance.co.uk

WEA Takeley

Hidden treasures

An introduction to places you might not have thought of visiting, unusual and sometimes of the beaten track

Venue

Takeley Community Centre, Monday the 9/1/2012 for ten weeks, starts at 8.0pm

Tutor

Graham Slimming

Fee

£45-00 for ten week course

Contact

Pat Burnett on 01279870578

URGENT: CAN YOU HELP FIND A HOME FOR OUR BOOKS?

We're urgently seeking a new home for our book collection which, as you know, we regularly offer for sale to raise funds for the campaign.

The need has arisen following the closure of the Old School House in Takeley for health and safety reasons and SSE's recent move to Molehill Green. While our campaign office's new home at the village hall is a perfect base for day-to-day activities, it simply isn't suitable for housing the books or for holding sales open to the public.

As a result, a new base is needed by Christmas for book display and storage on free-standing shelves which the campaign has gathered over the years as a result of the efforts of the stalwarts who have managed this important fundraising initiative for SSE. The current facilities consist of a hall approximately 10m by 6m and comparable space would be ideal, but all possible solutions will be gratefully considered.

The deadline for finding a new home for and transporting the books is Christmas Eve and anyone who might be able to offer a useful suggestion as to a possible solution is invited to contact SSE on 01279 870558 or by email on info@stopstanstedexpansion.com.

The Campaign Team

Stop Stansted Expansion

01279 870558

info@stopstanstedexpansion.com

www.stopstanstedexpansion.com

SPARKLERS

The "Sparklers" group is for pre-school children, their parents, and carers. It is an informal meeting in Takeley Community Centre, South Road, with a short time of Christian worship, craft activities, toys, and refreshments.

There will always be a warm welcome for other children if they would like to come and join us.

Sparklers meet on a Monday, but not the first Monday in the month and not bank holidays.

Each meeting starts at 10am and finishes at 11.30am.



'THE JAGUARS'

B&B AUTO DISMANTLERS

Registered Reclamation
Re-cycling Agents

*The Jaguars
Dunmow Road
Takeley
Bishop's Stortford
CM22 6SJ*

*Tel: 01279 871437
Fax: 01279 871638*

**Do you require
any help from a
local accountant?**

**Book-Keeping
Accounts
Self Assessments
Vat Returns**

Telephone Alan on:
01279 870364
Mobile 07766705906 or
Email: a.jones08@btinternet.com

“STRICTLY” FOR YOU



BALLROOM AND LATIN DANCE CLASSES BY JOHN AND LINDA WEST

EVERY FRIDAY

**AT GREAT DUNMOW PRIMARY SCHOOL, WALNUT WALK,
WOODLANDS PARK DRIVE, GREAT DUNMOW CM6 1ZR**

(New Beginners' Class Starting)

BEGINNERS 7.00-7.45pm

INTERMEDIATE 7.45-8.30pm

ADVANCED 8.30-9.15pm

Practice session in separate hall 7.00-9.15pm

BENEFIT FROM HAVING TWO TEACHERS PER CLASS

Contact Tel: John(m) 07880 605105 Linda(m) 07709 947671

email: info@simply-the-west.co.uk

www.simply-the-west.co.uk

POULTON PORTABLES (STANSTED) LTD

Dunmow Road
Takeley, Bishop's Stortford, Herts, CM22 6SH

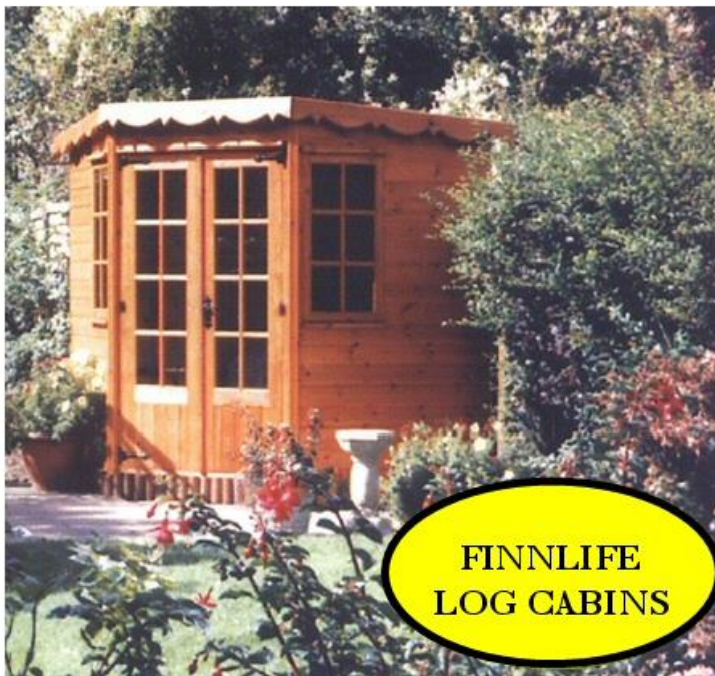


LARGE SHOW SITE OPEN 6 DAYS / WEEK

Tel: 01279 870472 Fax: 01279 873905

Email: herts@poultons.co.uk Web: www.poultons.co.uk

FULL COLOUR BROCHURE/PRICES AVAILABLE ON REQUEST



FINNLIFE
LOG CABINS

**Manufacturer of
Quality Timber
Buildings since 1951
for the Domestic and
Commercial Markets**

**Summer Houses • Corner Cabins • Offices • Studios •
Workshops • Gamesrooms • Stables • Apex Sheds • Potting
Sheds • Pent Sheds • Beach Huts • Playhouses • Space Savers -
Standard and Custom Sizes**



Delivery Charge
for all Buildings
£25 Minimum

MEDIACOMS

Your Local **TV AERIAL & SATELLITE SPECIALIST**

- TV, FM & DAB Aerials
- Sky Subscriptions & Upgrades
- Freesat Installations & Receivers
- Plasma & LCD Fitting Service
- Freeview Installations & Receivers
- Established Family Run Business
- Dish Repairs & Alignments
- Foreign Satellite Installations
- RDI-LB & CAI Plus Approved
- Commercial & Domestic

Visit our website for current offers



01279 871 777 - 0800 587 2556
6 Newman Road, Little Canfield, Dunmow, Essex, CM6 1GR

Free Sky+HD box

For both new and existing customers joining Sky+HD, set-up fee also applies.
Pre-registration may be required. New Sky+HD households



You get all of Sky Sports with Sky

sky SPORTS 1

sky SPORTS 2

sky SPORTS 3

sky SPORTS 4

sky SPORTS NEWS

www.mediacom.com

info@mediacom.com

TAKELEY FARMERS' MARKET

(first Saturday of every month)



Since August my husband and I (Paul & Pat Burnett) have taken over the running of the farmers market from Sue Sadler and at this point we would like to say a Big thank you to Sue for all the hard work she has put into the market.

For those people who have not yet visited our market we can tell you we have a veritable treasure trove of fresh, tasty and attractive local produce with a wide variety of handcrafted goods. Our selection of freshly baked bread comes straight from Mayfield Farm around 8am and is on the stall by 9am. The aroma is just mouth-watering when you walk through the door.

We will continue with the kitchen still available for different charities/clubs so if you would be interested in running the kitchen for your charity please get in touch.

May we take this opportunity to wish everyone a very Merry Christmas and a Happy New Year

For all information you can contact us at paul@pburnett1.orangehome.co.uk
01279870578

TEAM2CLEAN
www.team2clean.co.uk



Best Cleaners Around!

*With a friendly, professional and efficient staff **TEAM 2 CLEAN** is the cleaning company you can trust to give a professional, flexible service to match your individual demands. Our services include:*

- 🌀 Domestic cleaning*
- 🌀 Commercial cleaning*
- 🌀 Office cleaning*
- 🌀 End of tenancy cleaning*
- 🌀 Oven cleaning*
- 🌀 Carpet and hard floor cleaning*

CALL NOW:
07511 782 317
01279 655 318

E-MAIL:
cristina@team2clean.co.uk

Tallen's Country Notes

My house martins left in mid September having raised two broods. The nest that fell to the ground was not replaced so I hope that next spring when they arrive back from South Africa this nest will be rebuilt. Gold finches also appeared to have had a good year as their numbers have increased as the number of juveniles visiting the feeders is substantial.

I am keeping a careful eye on my pond as the frog population seems to have a problem. After a quiet mating period, spawn appeared at the end of February then most of it disappeared. If I had fish in the pond I would have guessed that the spawn had been eaten but as I have no fish I am a little puzzled.

The frogs appear healthy with no 'red leg or other fungal diseases'



It is strange how things that we have taken for granted over the years suddenly cease to happen, leaving one a little flummoxed. For example, the robin that had regularly appeared in the garden to feed suddenly isn't there any more, or the blue tits that have nested in the same box for years decide they will nest elsewhere. It all goes to show that those creatures that depend on us for many things are not creatures of habit but more creatures of opportunity!

I have commented numerous times on that British pastime namely, 'our weather', and how the experts seem to get it wrong. The latest blunder was at the start of this year when we were told to be prepared for a "barbecue summer". Us Brits are a hardy lot and tolerate many things but having a barbecue in the rain is just not on. Not only is it hard to light the fire but the rolls go all soggy.

There are many amateur weather forecasters out there who use various ways to forecast what is in store for us over the coming months. Some use past records, others hang up seaweed, even pine cones. All are said to hold the secret of the weather. However there are other ways to help us to foretell what is in store and when you think about it they are usually right. I speak about nature's creatures, the birds, bees and other animals that have rely on their instincts and nature's way of things!



As I am a rustic type, I believe that some of those rural weather predictions have a certain amount of logic; after all they go back in antiquity to when there was no Met. Office with up to date meteorological instruments and other forecasting methods but who still manage to get it wrong.

Local customs, long before the weather centre was set up, had to use 'the signs' that confronted them as they went about their business. They observed the sunsets, cloud formations, from what direction was the wind blowing, the fruits on the bushes in autumn, the arrival of migratory birds in spring and when these birds left our shores at the end of the summer. Little things mattered such as how high are the insects flying and the bee keeper, just by watching his hives, could tell what sort of winter to expect. For example, last year it was reported by bee-keepers that their hives had become dormant in early September and upon feeling the weight of the hives a large stock of honey was evident. It all pointed to a harsh winter and sure enough those little creatures were right. This year those little wing striped insects were still buzzing around in early October building up supplies of honey thereby increasing the weight of the hives. Thus I am reliably informed that we are going to have a cold winter but not until after Christmas.

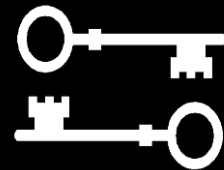
My I take this opportunity to wish you all a happy and warm Christmas.
And keep feeding our feathered friends.

Tallen

TAKELEY LOCAL HISTORY SOCIETY UNLOCKING THE PAST

<http://tlhs.org.uk>

chairman@tlhs.org.uk



Next year (2012) the Queen's Diamond Jubilee will take place. Those of you over 40 will no doubt remember the Silver Jubilee in 1977. In many places (including the village I am from) street parties were held for the children, celebration mugs were handed out and it was generally a big community event. Whether you are of a royalist persuasion, or otherwise, these events do tend to bring communities together, a chance for a town or village to pull together and organise something that will be remembered – our own little contribution to history. Old newspaper reports show us that Takeley has always celebrated such occasions and I remember the relatively recent celebrations for the 50th Anniversary of VE day, the Queens Golden Jubilee and the Millennium. Takeley Parish Council has made money available for the people of Takeley to celebrate the Diamond Jubilee. It is up to the individuals and organisations of the village to decide what form the celebrations will take e.g. fete, music concert, street party, flower festival etc and if they need funding to contact the Council. Takeley Local History Society plan to attend an event with a display of old photographs of the village. So what will you be doing?

Steve Hazon, Chairman, Takeley Local History Society

Articles from the past, by Pat Salmon

Report in the Herts & Essex Observer - Friday 22nd February 1960.

"ERECT HALT SIGN WITHOUT WAITING FOR A PILE OF CORPSES" COMMITTEE DISCUSSES FOUR ASHES CROSS-ROADS

When the cross-roads at the Takeley 'Four Ashes' was again discussed at a meeting of Dunmow Road Safety Committee on Tuesday and reference was made to the possibility of erecting the new "Yield" sign, Mr J Winder commented "I think we are all in favour of a "Halt" sign, and I do not think we should wait to find a pile of corpses before we erect it.

At the last meeting of the Committee Supt R.A.P. Barnard told members that the volume of traffic using the cross-roads did not warrant traffic lights. The present "Halt" sign in Parsonage Road and the "Slow" sign in the Hatfield Broad Oak Road should in the opinion of the police, be sufficient warning to motorists to approach the cross-roads with care. It was envisaged that in the future there would be some major alterations due to estate developments near the cross-roads. At Tuesday's meeting Supt Barnard said the "Yield" sign was an American traffic sign and it was planned to erect them in certain parts of the country. Parsonage Lane and the Hatfield Broad Oak Road seemed ideal places.

Mr Winder said there was no point in erecting a road sign that no one knew anything about. The answer appeared to be to erect "Halt" signs on both roads, not only for the safety of motorists but also for the pedestrians,

NEW REGULATIONS.

Supt Barnard said he thought the "Yield" sign was a good idea and would probably come into force all over the country with the new transport regulations which Mr Ernest Marples, Minister of Transport, was hoping to introduce in the summer. The Committee decided to defer discussion about the erection of the "Yield" sign until the next meeting. Sergeant Horne reported that although the number of accidents in the Dunmow Rural district during the past year had not been totalled up there had been a definite increase. During November there had been 19 accidents, seven of which were serious, compared with three serious and four slight accidents in the same period in 1958. There were 18 accidents in December, one fatal, and seven serious, compared with five serious and three slight accidents in December 1958. Accidents to children had fortunately been fewer, continued Sergeant Horne. Only three children were injured in road accidents, none of them serious. There were only two accidents during Xmas which was about average.



Takeley Cricket Club

Nov 2011



A successful 2011 season for both our 1st and 2nd XI teams, in that we achieved our goal to remain in divisions 2 and 6 respectively. Teams in these leagues are more local to us which makes away games more enjoyable. To celebrate our season, we recently held our annual presentation dinner, and were pleased to make the following awards:

- 1st XI Batting – Damon Miles
- 1st XI Bowling – Liam Brown

- 2nd XI Batting – Paul Jarvis
- 2nd XI Bowling – Gus Sammons

- Sunday Batting – Adrian Phillips
- Sunday Bowling – Tom Brown

- Merivale Cup – for youth achievement – Tim Way
- Mary Deval Plate – for all round club activity – Roy Smith
- Arthur Shuttlewood Shield – for outstanding performance – Andrew Osborne

Andrew played in every possible game (Saturdays, Sundays and midweek).

We were also pleased to present recognition certificates and medallions to our three Jack Petchey Foundation youth winners for 2011 – Andrew Osborne (March), Tim Way (June) and Jack Connolly (September)

Anyone interested in playing next season, please contact Chairman Mike Phillips on 01279 870134 or Captain Chris Thake on 01279 757549. Potential youth players can contact our youth coach Tim Connolly on 01279 870138.

A big thank you to everyone who has supported our fund raising quizzes this year; the support we get is hugely appreciated. We have already set dates for next year, and will be running a Race Night on Saturday 3rd March 2012. Our quiz dates are Saturday 14th April and Saturday 13th October.

Malcolm Brown
01279 871055

Neck 4 Heights

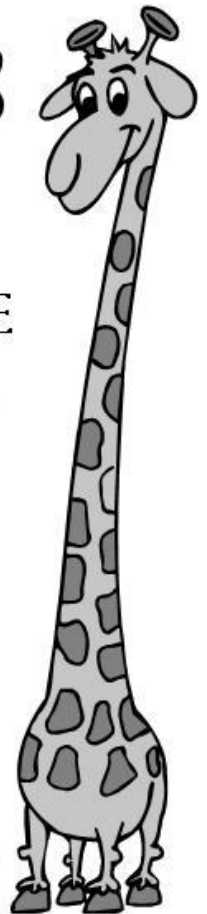
SPECIALISTS IN HIGH LEVEL

WINDOW CLEANING USING STATE OF THE
ART, CHEMICAL-FREE THERMO REACH &
WASH SYSTEM

Windows, Fascia, Conservatories, Skylights, Atria,
Paneling, signs etc. all cleaned to a spot-free finish
with a reach of up to 20 meters with no ladder

01279 870 178

ENVIRONMENTALLY
SOUND



Binwash

wheelie bin
cleaning service

Schools - Pubs - Restaurants - Shops
- Households - Village Halls
Retirement Homes

- Try us for as little as £3 per month
- Professional equipment
- 4 weekly schedule or one-offs
- Same day as waste collection

FREE!
First Clean
to new
customers



www.binwash-uk.com

01799 529899

enquiries@binwash-uk.com



APPLETREE CATERING

Perfect door-to-door home
catering for every occasion:

- *Dinner parties*
- *Business meetings*
- *Special occasions,
Birthdays*
- *Garden celebrations*
- *Receptions,
Anniversaries*

– and other catered events.

To discuss our exciting high
quality range of hot or cold
dishes, please call *Tracey or Rick*
on:

01279 871450, 07875 233206,
07850 717243,

tracey.wise197@btinternet.com,
rick123uk@hotmail.com.



Established 1993



Broad Oak Consultants **IT Solutions for everyone**

Networks - PC Sales

Internet - Repairs

Upgrades - Training

Web Design-Programming

Virus Protection

For Home and Business

We can connect you to
Broadband Internet.

 01279 718596

Fax: 01279 718767

Web: www.broadoak.net

Email: sales@broadoak.net



business partner





A.Y.S. INSURANCES



INDEPENDENT INSURANCE INTERMEDIARIES
Ellesborough House · Four Ashes Crossroads · Takeley
Bishop's Stortford · Herts CM22 6SH
Tel: 01279 871029 Fax: 01279 871997

Email: ays@btconnect.com

Your local Insurance Broker

For all your insurance needs including:

Commercial Risks

Private medical



Cars and Vans

Household

A.Y.S. Insurances is a Trading Division of A.Y.S. Financial Services
FSA No. 301617

Partners: Robert Newman Roger Penny

Hatfield Forest

Highlights

At 5pm on Monday 31st October the main entrance gate was closed for the final time to mark the end of the season.

Throughout the winter period the gate for cars will only be open on Sundays, this means that there

will be a pedestrian only route through the Forest for the other six days. This winter is going to be an extremely busy period for all of us at the forest as we are about to start work on a number of major projects. For those of you that haven't yet heard about the changes to the access route: the current access road will become 2 way and a new kiosk will be constructed on this road. When you next visit the forest, make sure you have a look in the 'Discovery Room' which will show you the new road system more clearly. You will also see our plans for the new 'Sensory Boardwalk' which we have been working on in conjunction with St Elizabeth's College, Much Hadham, as well as the plans for a new digital media system and an exciting new interactive display in the 'Discovery Room'.

We also welcome Hannah as the Visitor Experience Team Leader and Brian on the Conservation Team.

As we reach the end of a busy year we would like to thank all of you that have visited the forest and supported us through the various events held throughout the year. The season started with the most incredible Easter weekend during which 1644 children followed the Easter trail! Since then our visitors have: wandered leisurely along the trails, been amazed by the size and age of our ancient trees, watched deer, listened to bats, learnt how to survive, been taken on many guided walks, wagged their doggy tails, been entertained with some wonderful outdoor theatre, learnt how to photograph wildlife, approx 4,000 people came to Woodfest (which will be a major event for us next year!) discovered the versatility of cooking with venison at our taster event and 162 children were spooked at our frighteningly fun Halloween weekend.

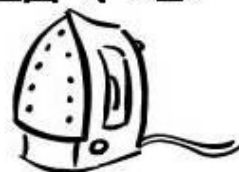
It has been a varied year: We have loved sharing the magic of Hatfield Forest with you and look forward to seeing some of you on the Father Christmas Trails and Carol Concert at the Shell House and then into 2012.

Happy Christmas.

Hannah Morrice, Visitor Experience Team Leader



TAKELEY IRONING SERVICE



**For all your domestic and commercial
laundry requirements**



FREE COLLECTION AND DELIVERY

- ∞ Wash, dry and iron ∞
- ∞ Duvets and pillows laundered ∞
- ∞ Free hangers and packaging ∞
- ∞ Professional and efficient service ∞
- ∞ Competitive prices ∞
- ∞ Quick turnaround ∞

**OUT OF HOURS COLLECTION AND
DELIVERY SERVICE AVAILABLE**

Telephone: 01279 871 245

Unit 4, Warish Hall Farm, Warish Hall Road,
Takeley, Bishop's Stortford, Hertfordshire CM22 6NZ

Book Review by Elaine Wyld

The Help By Kathryn Stockett

History is an interesting subject for most of us so when an opportunity comes by to read about genuine past events in more detail you have a captive audience. In writing her novel about Jackson Mississippi in 1962 Kathryn Stockett has produced an interesting and popular piece of work. The author writes with such vivid description and detail that you almost feel you are there in the story with the characters!

Aibileen and Minny are hired helps and like many black families at that time live in the poor areas of the town in small houses with tiny back yards. Resigned to a life of dependence on the rich white families working as maids and nannies, they struggle to bring up their own children with little money or help but regularly attending Church meetings and gatherings for support and sympathy.

Eugenia Phelan known to her friends as "Skeeter" has just returned home after completing her four year college degree. Her mother is more concerned about her daughter's marriage proposals than her education, but Eugenia is a modern girl reacting against the status quo. Settling back onto her old life as part of the influential ladies social circle, taking part in dinner parties and bridge drives, Skeeter cannot forget the unexplained absence of her beloved nanny, Constantine. In frustration at the lack of information about Constantine's absence, Skeeter embarks on finding out the truth. Her ambition to become a writer leads her into contact with Miss Elaine Stein from a New York newspaper. She is soon persuaded to interview domestic housekeepers and reveal details of their lives.

Risking her reputation, popularity, and social position Skeeter encouraged by Miss Stein and the birth of the civil rights movement, writes a journal for publication. Secretly interviewing the maids she writes candidly about their experiences as she witnesses the prejudices and double standards of the society she has been born into.

Skeeter has her own personal struggles as well with her mother's increasing ill health and her romantic attachment to the Senator's son, will all her relationships suffer when the book is published and will she learn Constantine's fate?

Penguin
ISBN 978-0-141-03928-2

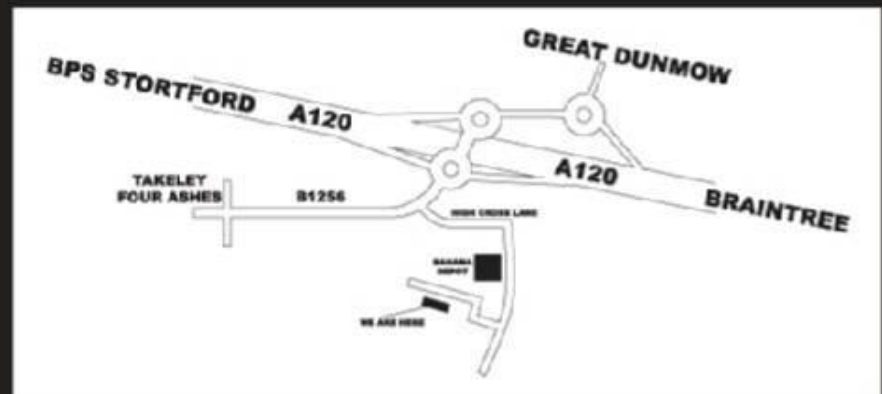
£7.99

ROB WHITWELL MOTOR ENGINEER

ESTABLISHED 1993

A MEMBER OF THE INSTITUTE OF MOTOR INDUSTRY

Over
35
years
experience



**CARS, HORSEBOXES,
LIGHT COMMERCIAL VEHICLES,
MOTORHOMES & TRAILERS**

**Servicing, Repairs,
Air-Conditioning,
Brakes, Tyres, Exhausts,
MOT's arranged**

OPEN 6 DAYS A WEEK

**01371
872764**

**VISIT
OUR NEW
DINER STYLE
WAITING AREA
WITH FULL SIZE
PINBALL
MACHINE**

Visit us at:
www.goodgaragescheme.com

About the Takeley Parish Council Newsletter

The Newsletter was started up again in the autumn of 1998 (after an interval of some 10-15 years) as a result of opinion expressed in the Village Appraisal. It is designed to provide a free community magazine for Takeley Parish. It is intended that the Newsletter should reflect all aspects of Parish life and should provide an opportunity for community matters to be raised and discussed.

The Newsletter team currently comprises a Contributing Editor (Paul Regeli), a compositor (Steve Hazon) and a distribution and advertising coordinator (Jane Heskey) but no official reporters. An interest magazine, therefore, depends on articles, news and advertisements coming from people in the village and nearby which can be sent to:

Jane Heskey, Clerk of the Council, Takeley Parish Council, Station House, Sycamore Close, Takeley, CM22 6QA
Tel. 0208 270 1149

or email to newsletter@takeleypc.co.uk

The closing date for submission of material is the 15th of November, February, May and August for the respective quarterly issues.

It is not always possible to publish everything submitted and sometimes changes have to be made to the length of a contribution. Non-controversial articles cannot always be published immediately but they will appear later unless the contributor is told otherwise. Contributions of up to, say, 400 words, have a greater chance of being published in full than longer ones.

The name of the person (and in what capacity if appropriate) submitting the material must accompany the contribution. If you do not want your name published you must make that clear. However, articles without the author's name are only likely to be published if they are non-controversial. Ultimately the responsibility for publication rests with the Parish Council, which has veto powers as to content.

Advertising rates per issue (quarterly) are listed below. Payment and details must be supplied to the Newsletter by the closing dates listed above although we do prefer annual payment in advance to reduce administration.

1. Full Page (i.e. one half A4 sheet size), £25.00 Photo or disc ready
 2. Half Page, £15.00 Photo or disc ready
 3. Quarter Page, £10.00
 4. One Eighth Page or less, £7.00
- (10% discount for pre-booking all four issues in a year)

All cheques should be made out to Takeley Parish Council and sent to Jane Heskey.

Superb organic cleaning of carpets, curtains, upholstery & leather

- Organic carpet, upholstery and leather cleaning
- Curtains and mattresses deep cleaned
- Guardsman stain protection plans
- Oriental rug cleaning
- Allergy treatments available
- Expert spot and stain removal
- All work fully insured and guaranteed

For a FREE non-obligational quote call Matt:

0800 7836647

www.safecclean.co.uk

Safe Organic
Cleaning

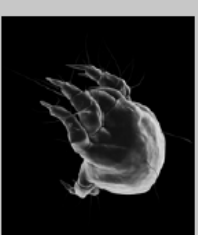
Allergy-Out
The Organic Allergen Treatment

Our treatments

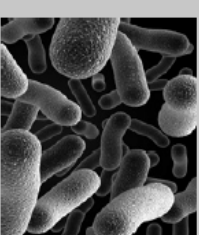
Remove Odour



Remove Dust Mites



Remove Bacteria



Safeclean[®]
The furnishing care specialists from **GUARDSMAN**